

HX25Az HX30Az

COMPACT EXCAVATOR



Engine Output
24.8 hp (18.5 kW)

Bucket Capacity
0.06 m³

Operating Weight
2685 – 2890 kg

BREAKING STANDARDS IN PRODUCTIVITY & PERFORMANCE

Introducing two new HX A-Series compact tracked excavators, the HX25A Z and HX30A Z with zero tailswing. Both machines benefit from brand-new Stage V engines, delivering 24.8 hp (18.5 kW) gross power. The machines are also available with quick coupler fitting, for easy attachment changes to increase your productivity.

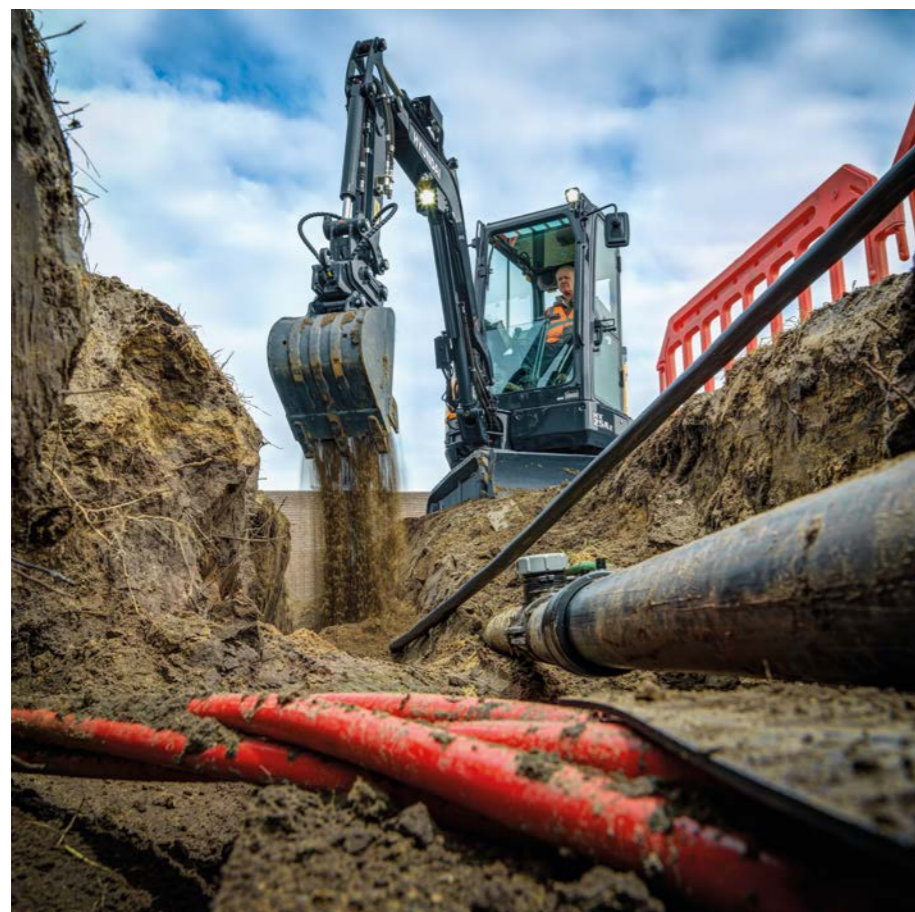
Greater efficiency

The new engine meets EU Stage V emission regulations without needing special exhaust after-treatment devices, resulting in reduced maintenance costs.



◀ Easily transportable

With a compact zero tailswing design and low 2610 kg weight, the HX25A Z can be easily transported on any small trailer together with a quick hitch, a breaker and 3 buckets without exceeding the regulatory weight limit.



◀ 2-way auxiliary piping

Both models are equipped with 2-way auxiliary piping as standard. Single or double acting mode can be selected by the operator.

Quick coupler piping **OPTION**

The HX-A mini excavators are available with an optional factory-fitted hydraulic line to operate any hydraulic quick coupler. This allows quick changes of attachments without having to leave the cabin.

▶ True zero-tail

The HX25A Z and HX30A Z are both true zero tailswing excavators with no rear overhang, allowing them to rotate freely within their own footprint. This enhances manoeuvrability and safety, while minimising the risk of damage to surrounding structures.

Long arm **OPTION**

Several dipper arm length options are available to perfectly adapt your machine to match the job in hand.



BREAKING STANDARDS IN COMFORT & EASE OF USE

Our new cabin has been designed with operator comfort and convenience in mind. Optimised ergonomics and advanced features allow you to work with greater ease and efficiency. With its spacious interior and high-visibility design, our new cabin offers an unparalleled level of comfort and safety, ensuring that you can work for extended periods without fatigue or discomfort.



◀ New 5-inch digital display

The HX-A mini excavators have a new 5-inch LCD full-colour display monitor, allowing you to easily control excavator settings and quickly access critical functions and daily operations. The monitor is also IP68 waterproof, especially important if working in a canopy model.

Auto-shift travel speed

This automated feature allows for seamless transitioning between high and low travel speeds, allowing the operator to focus on the task at hand while the machine takes care of speed and traction adjustments.

◀ Excellent visibility

Experience a whole new level of visibility with our latest cabin design. Enhanced visibility provides you with a wider and more expansive field of view, giving you a clear and unobstructed view of your surroundings.



Dozer blade lever and Drive speed switch **A**

Two-handed operation for skilful and efficient levelling with drive mode changeover on the drive lever handle.

Proportional joysticks **OPTION B**

The proportional joysticks greatly improve the operating efficiency of your machine and attachments.



◀ Modern audio system

Relax with convenient modern functions like the MP3 radio with added USB ports and enjoy hands free calls.

Canopy version **OPTION**

To better adapt to different work environments, both machines can be supplied with a canopy.

BREAKING STANDARDS IN SAFETY

HD Hyundai excavators have some of the highest safety standards in the industry, offering state-of-the-art features, some of which are unique in the industry. Our philosophy is to care for the machine, operator and the environment.

Auto Safety Lock

The auto safety lock prevents unintentional ignition and machine movement. When the safety lever is locked, the engine cannot be started and the system will not engage.

Overload warning

Available as standard, this warning device gives an audible and visible alarm when there's too much weight being lifted, to alert the operator.



Work light & beacon lamp **OPTION**

Travel Alarm

Emergency Engine Stop Switch

Safety Belt **NEW**
Warning Alarm



TECHNOLOGY
TO KEEP YOU
SAFE

Safety valves

The safety valve on the boom, arm and dozer blade cylinder ensures safe digging or lifting with the blade down, even in case of a sudden pressure drop.

New cylinder and hose protection

New cylinder guards as standard on the boom, arm and bucket provide increased protection, reducing the risk of downtime and costly repairs. Our new boom design routes the hydraulic hoses inside to avoid damage when working, enhancing safety and durability.



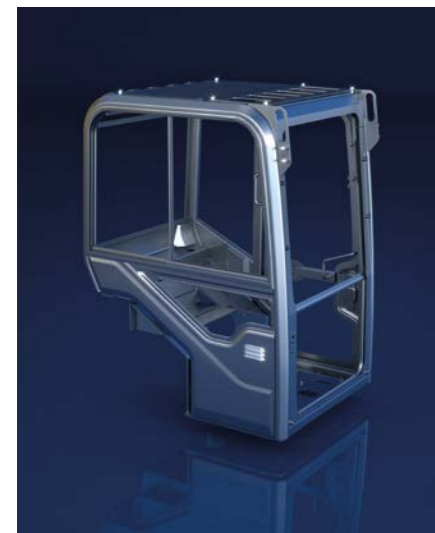
Cabin structure

The HX A-Series cabin structure uses integrally welded low-stress, high strength steel to meet ROPS, TOPS and FOPS certification.

- **ROPS:** Roll-Over Protective Structures ISO12117-2
- **TOPS:** Tip-Over Protective Structures EN13531
- **FOPS:** Falling Object Protective Structures Level 1, ISO3449

Anti-theft system

The system includes a password-protected ignition key, to prevent the engine from starting without the correct key. Additionally, there is an optional GPS tracker (Hi-Mate) that allows you to quickly locate the machine in case of theft.



BREAKING STANDARDS IN SERVICEABILITY & TELEMATICS

The true value of HX A-Series machines lies in their durability with robust structures and attachments, as well as easy access for maintenance and long service intervals. Cutting-edge telematics allows owners and operators to access vital machine information onboard and remotely.

Designed for easy maintenance

Our machines feature wide opening access panels. These panels provide ample space for you to reach and service key components with ease.



Improved attachment durability

Our upgraded attachments are designed to withstand the toughest work environments, featuring reinforced steel components and advanced welding techniques to ensure maximum strength and longevity.

Hi MATE

It's convenient, easy and valuable. Hi MATE, HD Hyundai's remote management system, utilises GPS satellite technology to provide customers with the highest level of service and product support available.

Increase productivity

By providing information such as service hours, and idle time, Hi MATE saves you money and improves productivity. Service alerts enable better maintenance planning.

Monitor your machines

Hi MATE's real-time location information allows convenient monitoring of your equipment via the Hi MATE website or mobile app.

Improve Security

Protect your equipment from theft or unauthorised usage. Hi MATE's geofencing alerts notify you automatically when a machine leaves a predetermined zone.

Mobile fleet app

Our new mobile app provides all the information you need to run your equipment more efficiently and economically. It has been optimised for fleet management, providing health insights based on telematic technology to keep your machines working at maximum performance.



Keeping you covered

HD Hyundai Genuine Parts and Accessories are designed to keep your machine running at optimum performance, with 24-hour delivery across our dealer network. HD Hyundai Standard and Extended Warranty Programmes provide peace of mind and give you full control over your operating costs.



HX25A Z / HX30A Z SPECIFICATIONS

SPECIFICATIONS		HX25A Z	HX30A Z
Model		HX25A Z	HX30A Z
Operating weight	kg	2685	2890
Transport weight (canopy/cabin)	kg	2480 / 2610	2685 / 2815
With long arm & add'l c/w	kg	2629 / 2759	

ENGINE		HX25A Z	HX30A Z
Manufacturer		Kubota	Kubota
Model		KUBOTA D1305	KUBOTA D1305
Type		Vertical, water cooled 4-cycle IDI Diesel engine	Vertical, water cooled 4-cycle IDI Diesel engine
Emission standard		Stage V	Stage V
Gross	hp (kW)	24.8 (18.5)	24.8 (18.5)
Net	hp (kW)	24.4 (18.2)	24.4 (18.2)
Peak torque	Nm	81.4	81.4
No. of cylinders		3	3
Bore x Stroke	mm	78.0 x 88.0	78.0 x 88.0
Displacement	cc	1261	1261

HYDRAULIC SYSTEM		HX25A Z	HX30A Z
Pump type		Variable displacement tandem axis piston pumps	Variable displacement tandem axis piston pumps
Max. pressure	kgf/cm ²	220	220
Max. flow rate	l/min	2 x 28.2 + 20	2 x 28.2 + 20
Aux. flow rate (2way)	l/min	48	48
Fuel tank capacity	L	30	30
Hydraulic capacity (tank/system)	L	27	27

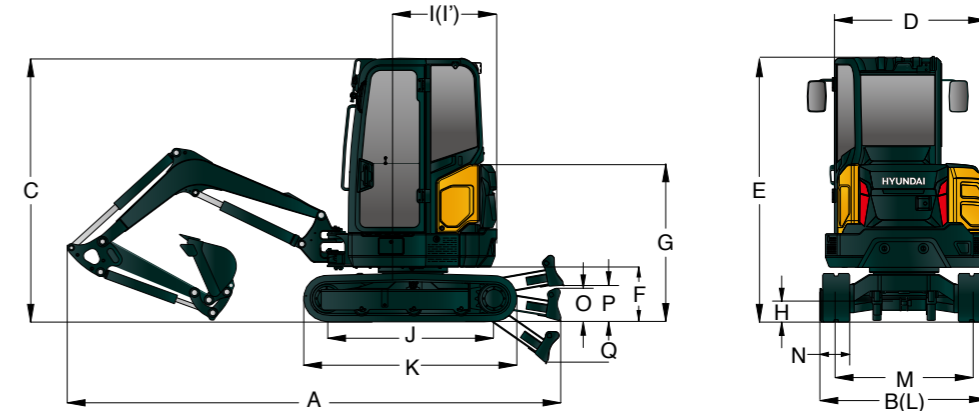
PERFORMANCE		HX25A Z	HX30A Z
Bucket breakout force (ISO)	kN	20	21
Arm tearout force (ISO)	kN	14	13
Travel speed (high/low)	km/h	4.35 / 2.38	4.35 / 2.38
Traction force	kg	2266	2266
Swing speed	rpm	916	916

KEY SPECIFICATIONS		HX25A Z	HX30A Z
Boom length	mm	2030	2030
Arm length	mm	1120 / 1300	1300
Bucket capacity, std. CECE	m ³	0.06	0.06
Bucket width (with/without sidecutter)	mm	432 / 474	432 / 474
Boom swing angle left/right	degree	70° / 50°	70° / 50°
Rubber track width	mm	250	300
Ground pressure (cpy/cab)	kgf/cm ²	0.32	0.27
Sound level			
Exterior sound level (2000/14/EC - ISO 6395:2008) Lwa	dB(A)	94	94
Interior sound level (ISO 6396:2008) Lpa	dB(A)	78	78

* All equipment dimension is based on cabin, standard boom/arm and counterweight.

HX25A Z / HX30A Z DIMENSIONS & WORKING RANGE

MACHINE DIMENSIONS



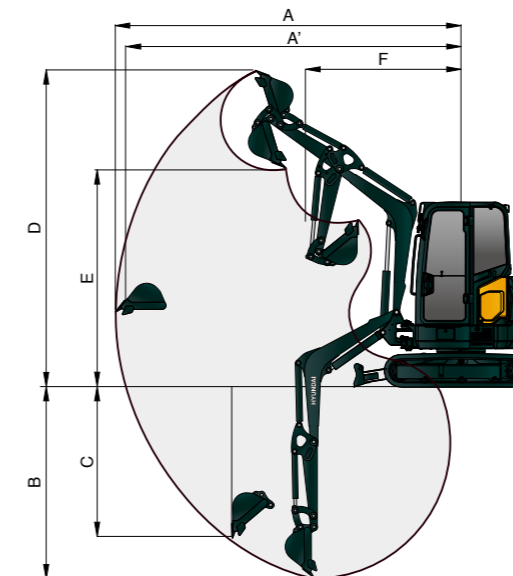
Unit: mm

	HX25A Z	HX30A Z
A Overall length (with 1230mm arm)	4150	4170
B Overall width (extension crawler)	1534	1550
C Overall height	2452	2452
D Overall width of upperstructure	1490	1490
E Overall height of cab	2452	2542
F Ground clearance of counterweight	504	504
G Overall height of engine hood	1522	1522
H Minimum ground clearance	183	183
I Rear-end distance (with add'l c/w)	775	875

	HX25A Z	HX30A Z
I' Rear swing radius (with add'l c/w)	775	875
J Distance between tumblers	1550	1550
K Undercarriage length	1975	1975
L Undercarriage width (extension crawler)	1500	1550
M Track gauge (extension crawler)	1250	1250
N Track width	250	300
O Height of blade	300	300
P Ground clearance of blade up	328	328
Q Depth of blade down	348	348

WORKING RANGE

Unit: mm



	HX25A Z	HX30A Z
Boom length	2030	2030
Arm length	1120	1300
A Max. Digging reach	4560	4725
A' Max. Digging reach on ground	4420	4600
B Max. Digging reach depth	2515	2695
B' Max. Digging reach depth (8' level)	2000	2230
C Max. Vertical wall digging depth	1970	2200
D Max. Digging height	4175	4290
E Max. Dumping height	2870	2975
F Min. Swing radius	2050	2100

HX25A Z / HX30A Z LIFTING CAPACITY

Rating over-front Rating over-side or 360 degrees

HX25A Z WITH CABIN

2.03m boom, std arm 1.12m, std counterweight 130kg, 250mm rubber tracks, dozer blade on ground

Lift-point height m		Lift-point radius												At max. Reach			
		1.0m		1.5m		2.0m		2.5m		3.0m		3.5m		Capacity		Reach	
																m	
3.5m	kg														*740	600	2.57
3.0m	kg									*690	470				*710	430	3.13
2.5m	kg									*680	470				*670	360	3.49
2.0m	kg							*810	610	*750	460	*720	350		*660	320	3.72
1.5m	kg							*1020	590	*850	440	*760	350		*670	300	3.85
1.0m	kg							*1240	560	*960	430	*820	340		*710	290	3.89
0.5m	kg							*1390	540	*1050	410	*860	330		*770	290	3.85
0.0m	kg					*1590	750	*1440	530	*1090	410	*880	330		*800	300	3.72
-0.5m	kg	*1190	*1190	*1420	1260	*1930	750	*1400	530	*1070	400				*820	330	3.50
-1.0m	kg	*1750	*1750	*2170	1270	*1690	760	*1250	530	*930	410				*840	380	3.14
-1.5m	kg			*1810	1300	*1270	770	*900	550						*830	520	2.59

HX25A Z WITH CABIN

2.03m boom, long arm 1.30m, add'l counterweight 270kg, 250mm rubber tracks, dozer blade on ground

Lift-point height m		Lift-point radius												At max. Reach				
		1.0m		1.5m		2.0m		2.5m		3.0m		3.5m		4.0m		Capacity		Reach
																		m
3.5m	kg															*670	580	2.85
3.0m	kg									*600	540					*600	450	3.35
2.5m	kg									*610	540	*640	420			*570	380	3.68
2.0m	kg									*680	530	*670	410			*560	340	3.89
1.5m	kg					*1230	980	*930	680	*790	520	*720	410	*610	330	*570	320	4.02
1.0m	kg							*1170	650	*920	500	*790	400	*710	320	*590	310	4.06
0.5m	kg					*1350	880	*1340	630	*1020	480	*850	390	*700	320	*640	320	4.02
0.0m	kg					*1580	860	*1430	620	*1080	470	*880	380			*720	330	3.90
-0.5m	kg	*1040	*1040	*1280	*1280	*2000	860	*1420	610	*1080	470	*860	380			*780	350	3.69
-1.0m	kg	*1500	*1500	*1880	1450	*1810	870	*1310	610	*1000	470					*800	400	3.36
-1.5m	kg	*2090	*2090	*2190	1470	*1460	880	*1060	620							*810	510	2.87
-2.0m	kg					*740	*740									*740	*740	2.00

- Lifting capacities are based on ISO 10567.
- Lifting capacity of the HX A-series does not exceed 75% of tipping load with the machine on firm, level ground or 87% of full hydraulic capacity.
- The Lift-point is bucket pivot mounting pin on the arm (without bucket mass).
- (*) indicates load limited by hydraulic capacity.
- Caution: please be aware of the local regulations and instructions for lifting operations.

HX25A Z / HX30A Z LIFTING CAPACITY

Rating over-front Rating over-side or 360 degrees

HX30A Z WITH CABIN

2.03m boom, 1.30m arm, counterweight 270kg, equipped with 300mm rubber tracks, dozer blade on ground

Lift-point height m		Lift-point radius												At max. Reach					
		1.0m		1.5m		2.0m		2.5m		3.0m		3.5m		4.0m		Capacity		Reach	
																		m	
3.5m	kg																*670	600	2.85
3.0m	kg																*600	460	3.35
2.5m	kg																*610	550	3.68
2.0m	kg																*680	540	3.89
1.5m	kg									*1230	1000	*930	700	*790	530	*720	420	4.02	
1.0m	kg											*1170	670	*920	510	*790	410	4.06	
0.5m	kg									*1350	900	*1340	650	*1020	500	*850	400	4.02	
0.0m	kg									*1580	890	*1430	630	*1080	490	*880	390	3.90	
-0.5m	kg	*1040	*1040	*1280	*1280	*2000	890	*1420	630	*1080	480	*860	390			*780	360	3.69	
-1.0m	kg	*1500	*1500	*1880	1490	*1810	890	*1310	630	*1000	480					*800	420	3.36	
-1.5m	kg	*2090	*2090	*2190	1510	*1460	900	*1060	640							*810	530	2.87	
-2.0m	kg							*740	*740							*740	*740	2.00	

- Lifting capacities are based on ISO 10567.
- Lifting capacity of the HX A-series does not exceed 75% of tipping load with the machine on firm, level ground or 87% of full hydraulic capacity.
- The Lift-point is bucket pivot mounting pin on the arm (without bucket mass).
- (*) indicates load limited by hydraulic capacity.
- Caution: please be aware of the local regulations and instructions for lifting operations.

STANDARD/OPTIONAL EQUIPMENT

MODEL	HX25A Z	HX30A Z
ENGINE		
Mechanical controlled Kubota engine	●	●
Double-element air filter	●	●
Water Separator with filter	●	●
HYDRAULIC SYSTEM		
Open center hydraulic system	●	●
Two-speed travel with auto-shift down function	●	●
Pressure accumulator	●	●
Proportional Aux. control	□	□
1 way Aux. hydraulic line for breaker	●	●
2 way Aux. hydraulic line for grapple	●	●
4 way Aux. hydraulic line for rotating	□	□
CABIN & CANOPY		
Cabin with heater	●	●
Canopy	□	□
ROPS (Roll-over Protective structure, ISO3471)	●	●
TOPS (Tip-Over Protective Structure)	●	●
FOPS Level 1 (Falling Object Prot. Strct.)	●	●
Front Guard	□	□
Adjustable Mechanical Suspension Seat	●	●
Travel levers with foot pedals	●	●
Retractable window with 2 gas struts	●	●
Travel alarm	●	●
5" digital cabin display - IP68 water & dust proof	●	●
MP3 Radio with USB connection	●	●
12V power socket	●	●
Side & Rear Mirrors	●	●
Cup holder	●	●
Horn	●	●

MODEL	HX25A Z	HX30A Z
WORKING EQUIPMENT		
Zero tail swing / Reduced tail swing	●	●
Boom swing function	●	●
Quick coupler piping	□	□
Safety valve on dozer blade	●	●
Travel & Swing motor with disc brake	●	●
1 LED work light on boom	●	●
2 LED work lights on cabin	□	□
LED beacon lamp	□	□
UNDERCARRIAGE		
Rubber tracks	●	●
Steel tracks	□	□
TELEMATICS		
Hi MATE Telematic system	□	□

- Standard
- Optional

* Standard and optional equipment may vary. Contact your HD Hyundai dealer for more information. The machine may vary according to International standards.

* The photos may include attachments and optional equipment that are not available in your area.

* Materials and specifications are subject to change without advance notice.

HYUNDAI



HD Hyundai Construction Equipment Europe nv, Hyundailaan 4,
3980 Tessenderlo, Belgium. Tel: (32) 14-56-2200 Fax: (32) 14-59-3405

Specifications and design are subject to change without notice.
Pictures of HD Hyundai Construction Equipment Europe products may
show other than standard equipment.

READY TO CHANGE YOUR WORLD?

Contact your HD Hyundai dealer.
hyundai-ce.eu/en/dealer-locator